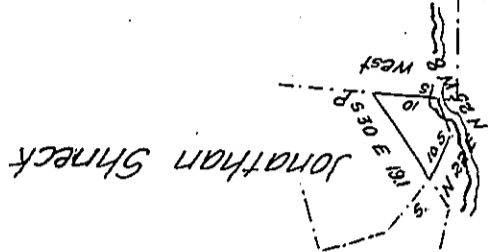


Late Christian Hoffman
now Jonathan Shneck

No 5
Part of Same now John Fry
and William Samuel



Late Adam Deedrich
now John Shuck

A draught of a tract of land Situate in lowhill township
 Lehigh County Containing one hundred and four perches and the
 Allowance of 6 P. Cent &c. Being part of a larger tract Containing
 one hundred and thirty eight acres and the allowance of 6 P. Ct. origin-
 ally Surveyed to Johannes Gumbert by Warrant dated November the
 20th 1751 the above surveyed December the 6th 1839 and returned
 for Jonathan Shneck

P.—

John Sherer D.S.

Jacob Sallade Esqr.

S. G.

IN TESTIMONY that the above is a copy of the original remaining on file in
 the Department of Internal Affairs of Pennsylvania, made
 conformably to an Act of Assembly approved the 16th day of
 February, 1833, I have hereunto set my Hand and caused
 the Seal of said Department to be affixed at Harrisburg,
 this twenty first day of March 1906

Joseph P. ...
 Secretary of Internal Affairs.